



Hayle Mill Road, Maidstone, ME15 6JW
Offers In Excess Of £350,000

NO FORWARD CHAIN

Hayle Mill is a Grade II listed former paper mill with a rich industrial heritage dating back to the 18th century. Once renowned for producing high-quality handmade paper used by artists, architects, and even royalty, the mill has been carefully and appropriately converted into a collection of unique homes. Many original features have been retained, and the development is set within beautifully maintained communal grounds that reflect the site's historic charm.

Set within a gated community, residents enjoy a sense of privacy and security, along with the benefit of allocated parking of which number 24 boasts two, one inside and one out, and additional visitor parking bays.

Number 24 is a beautifully presented two-bedroom home forming part of the prestigious Hayle Mill development, nestled within the picturesque Loose Valley Conservation Area. This unique property combines characterful heritage with contemporary design, offering stylish and comfortable living in a peaceful yet accessible location.

The entrance hall leads through a door opening onto a modern open-plan kitchen and dining area that flows seamlessly into the lounge. French doors from the lounge open onto a private, low-maintenance garden – thoughtfully arranged with a paved patio area. From here, steps lead up to a raised timber deck that enjoys elevated views over the mill pond and surrounding woodland, creating a truly tranquil setting in which to dine, relax and unwind.

Upstairs, the main bedroom benefits from an en suite shower room and a dressing area, while the second double bedroom features fitted wardrobes. A family bathroom serves the second bedroom and guests. The layout is thoughtfully designed for modern living, with excellent storage and a bright, airy feel throughout.

Viewing is highly recommended. Contact Page and Wells Loose Office today!



A Message from the Vendor

"This is especially for the person who will love my sister's home as much as she did.

My sister had spent almost all of her working life up in town whereas most of her friends and our family lived either in this area or in Kent.

I was surprised when she told me she was thinking of moving out of London and even more so when she mentioned Hayle Mill and its pond. My first thought was, naturally, flooding. "No, no," she assured me, "the whole Loose Valley is as safe as houses. (excuse the pun) They knew what they were doing those days when they built the paper mill".

She was quite right. Although the Medway overflows rather often it has never happened in the Loose Valley due to expert conservation and planning.

I still felt rather dubious about her choice until I actually went and saw her new home with my own two eyes. Well, four really, since my partner came, too.

It's set in a leafy wooded area which totally belies the proximity of supermarkets, the town of Maidstone and the noise of traffic. You can sit on the decking in the warmer months and watch the sun setting while dragonflies hover over the pond and its waterfowl. You might easily go into hermit mode as the house is

on the end of the terrace, if it's seclusion you want, you've got it...

My sister put a lot of effort and a large measure of love into making her home cosy and welcoming. True, the expenses were rather steep but well worth paying with so many services included. Not many residential complexes can boast an in-house gardener, gated security and friendly, helpful community.

James will be able to fill you in with all the other details but I just wanted to add a personal touch - why my sister made her choice.

I could add much more but that would ruin the surprise of what else the Mill and its community has to offer."

GROUND FLOOR

Entrance Hall

Lounge 12'11" x 12'7" (3.94m x 3.84m)

Kitchen/Dining Area 18'6" x 10'9" (5.65m x 3.28m)

FIRST FLOOR

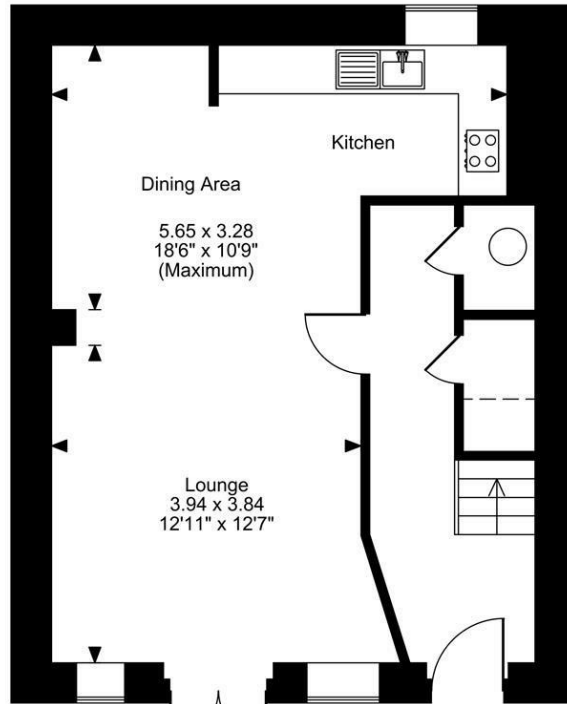
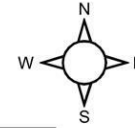
Bedroom 1 13'10" x 12'8" (4.23m x 3.87m)

En-Suite

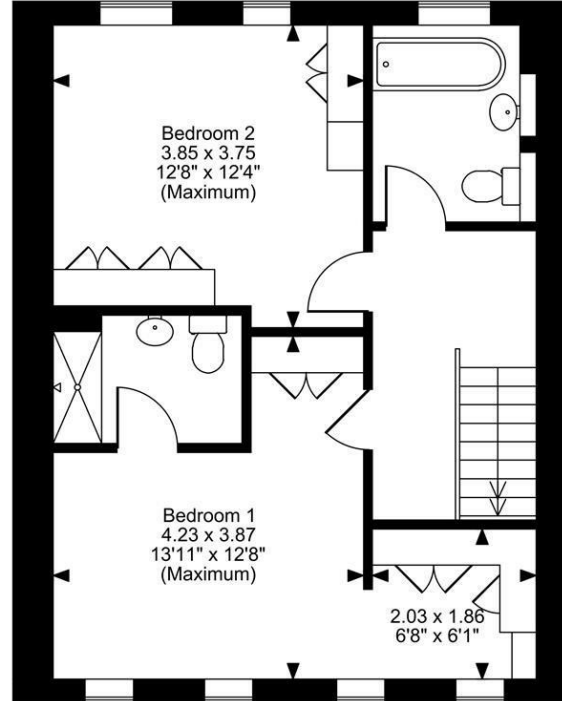
Bedroom 2 12'7" x 12'3" (3.85m x 3.75m)

Bathroom

Hayle Mill, Hayle Mill Road, Maidstone, Kent
Approximate Gross Internal Area
1001 Sq Ft/93 Sq M



Ground Floor



First Floor

FOR ILLUSTRATIVE PURPOSES ONLY - NOT TO SCALE

The position & size of doors, windows, appliances and other features are approximate only.

□□□□ Denotes restricted head height

© ehouse. Unauthorised reproduction prohibited. Drawing ref. dig/8657685/LCO

